

PRODUCT INTRODUCTION



MINI LASER ENGRAVING AND CUTTING MACHINE BCL-MU SERIES



World brand



WIFI Control



Honors

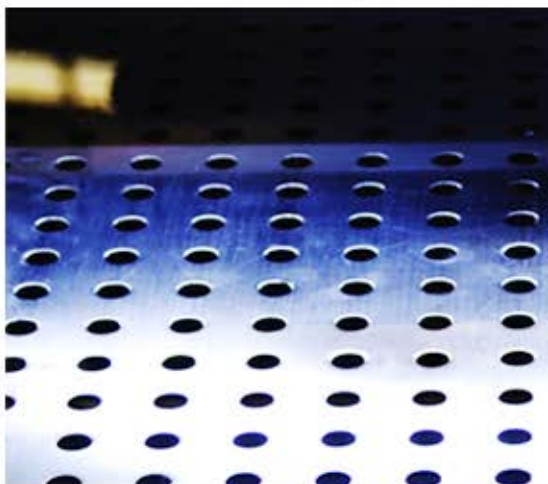


Multi-language
service

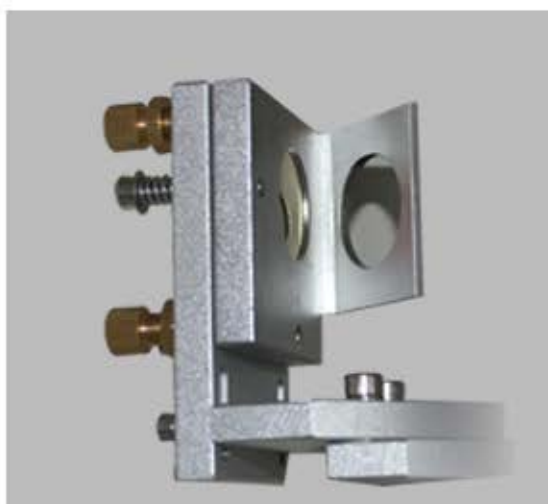
DETAILS INTRODUCTION



Big eye design Transparent acrylic window
easy to observe work process
Scientific 75° angle design accord
with human operation habit



**Stainless steel
up-down table** Very stable
never rust
high loading capacity



45° mirror adjustment set
Easy to adjust laser path



Door Sensor Interlock



Aluminum alloy buttons



All screws are made by stainless steel



Pneumatic support bar

PARTS AND FUNCTION



WIFI wireless control
Convenient - Wireless control
High efficiency - One PC can control
more than one set machines



Stepper motor
High-precision
3-phase stepper motor drive



Laser tube
When the working current is
4mA and the tube is in the state of
preionization, the laser can be used
for high-frequency impulse engraving



Japan Omron Electronic
components



It features equal load ratings in
the radial, reverse radial and
lateral directions, and self-aligning
to absorb installation-error.



Taiwan belt
Stable transmission
easy to maintain



Red cross dot position system
Accurate to position
convenient to cut and engrave



Lift platform is driven by ball screw
High precision low noise



LED light
Energy efficient highlight
long life time

MAIN FEATURES

10 BEST ADVANTAGES

1

Smart size Easy to
put and work

2

3 in 1 closed beam,
simple and generous

3

150mm stainless steel
up and down table with
ball screw, Higher accuracy.

4

"Big eye" design
Transparent acrylic
window,easy to view

5

Turn off the power to
continue engraving.
Open cover with protection

6

Stainless steel hollow table
Eject smoke well, never rust

7

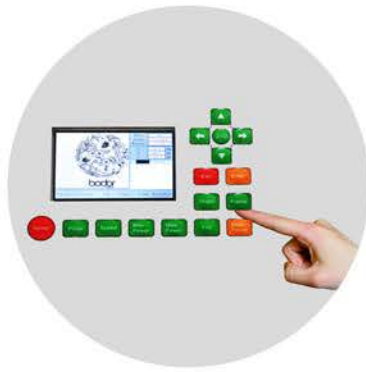
UP-down work table
Use ball screw
transmission system

8

High-efficiency laser tube
Excellent laser beam long
life time 4000-10000 hours

9

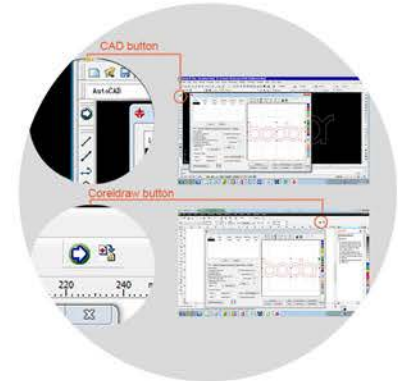
Professional control system
Offers fast cutting function
with shortest process path,
save time.



Control panel

demonstrate work process clearly
convenient to operate and view

Coreldraw&CAD control directly
Advanced working software which
can be embedded into Coreldraw and
CAD, User can operate the machine
byCoreldraw or CAD software directly



Professional control system
support fast cutting with shorest
path selection

Laser Power Supply

New panel shows the power and current, to help you to know more information of laser tube and power supply.

Idle 00.00.00 X: 0.0mm	File: W
Count 1 Y: 0.0mm	Speed: 215mm/s
	MaxPower: 30.0%
	X: 0.0 mm
	Y: 0.0 mm
	Z: 3000.0 mm
Power1:Voltage: 20.7KV Current: 8.1mA Control: 1.49V TTL	
Power2:Voltage: 0.0KV Current: 0.0mA Control: 0.00V TTL	

Three pictured below old laser power (black) on the left and the new laser power (right) white contrast:



BACK OF THE MACHINE



Safety lock



Earth wire & Fuse



USB interface ,
support off-line operation

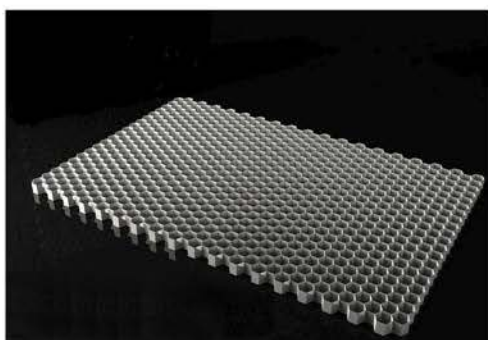


Universal socket



Exhaust outlet

OPTION



Honeycomb worktable



Rotary Device

MINI LASER BCL-MU SERIES

MACHINE PARAMETER

Model	BCL0503MU	BCL0605MU
Working Area	500*300mm	600*500mm
Laser Power	40W	40W/80W
Laser Type	CO2 Sealed Laser Tube, 10.6μm	
Cooling Type	Water Cooling	
Engraving Speed	0-60000mm/min	
Cutting Speed	0-40000mm/min	
Laser Output Control	(0-100% Set by Software)	
Min. Engraving Size	Chinese: 2.0mm*2.0mm, English Letter: 1.0mm*1.0mm	
Highest Scanning Precision	4000DPI	
Locating Precision	≤ +0.01mm	
Controlling Software	DSP Control System	
Graphic Format Supported	DST PLT BMP DXF DWG AI LAS,etc	
Compatible Software	TAJIMA,CORELDRAW,PHOTOSHOP,AUTOCAD,etc	
Drive System	High-precision 3-phase Stepper Motor	
Auxiliary Equipments	Exhaust Fan and Air Exhaust Pipe	
power Supply	AC110V/220V+10%,50HZ/60HZ	
Working Environment	Temperature:0-45°C,Humidity 5-95%(No Condensate Water)	
Optional Spare Parts	Honeycomb Worktable, Rotary Device,Auto-focus Device	

APPLICATION

- Industries: Mould industry (construction mould, aviation and navigation mould, wooden mould), advertising, decoration, arts and crafts, electronics, electric appliances, etc.
- Materials: Materials such as acrylic, wood planks(light planks,candlenut wood), bamboo ware, double color board, paper, leather, shell, coconut shell, ox horn, resin animal grease,ABS board, lamp shade, etc.

